



# ROHL FIRECLAY SINKS



Authentic Luxury for Kitchen and Bath®

ROHL®



Authentically crafted fireclay sinks are made of a unique clay capable of being fired at extremely high temperatures. These high temperatures cause the clay and glaze to fuse together, virtually creating an entirely new form. This clay is found in limited regions around the world, making true fireclay sinks some of the most durable sink options. Resistant to acid, alkali, scratches and impact, many fireclay sinks outlive the very spaces for which they were created. ROHL's fireclay sinks are crafted with environmentally friendly materials and are completely lead free and recyclable.



**Suggested Installation Tips for your new Shaws Original Apron Front Sink**

- Dimensions are plus or minus 2%: Inspect your sink. No two sinks are alike and you should inspect your sink upon delivery. The sides and top of the sink should be square within the 2% tolerance. The bottom of the internal sink bowl is designed flat with a slight graduated drain. Testing the sink for drainage is recommended. Shimming the sink may be needed to drain properly.
- The installation should be for new construction only to hold a 190 lb. sink and water.
- The most common installation design is undermounted below the solid surface.
- Design the sink counter top to leave room for the installation of faucets and accessories.
- Design the cabinet frame separately from the cabinet fascia. The support frame or base should be designed to support the sink on the sides and the back. The cabinet trim that frames the sink can then be custom fit around the corners.



SHAWS FIRECLAY SINKS

PAGE 4



In 1897, the apron sink was introduced by Shaws of Darwen, England. Today, every Shaws Original fireclay sink is still hand poured and shaped and stamped with the name of the artisan who created it. Our authentic apron sinks resist acid, alkali, scratches and impact, making them as versatile and durable today as they were a century ago.



ALLIA FIRECLAY SINKS

PAGE 6

Since 1892, Allia Fireclay Sinks have been made in world-renowned Limoges, France – the region best known for the making of fine porcelain tableware. Exclusively from ROHL, Allia Fireclay Sinks are as durable as they are beautiful. Each sink is covered with a thick layer of luminous glaze fired at 2,264°F, which fuses with the clay to provide an exceptionally strong, hard surface that is stain and chip resistant..



White



Biscuit/Pergame



Matte Black (Allia only)

AVAILABLE  
FINISHES

Shaws Original Sinks are available in White and Biscuit, while Allia Sinks are available in White, Pergame (Biscuit) or Matte Black. Both are made of genuine fireclay, a natural material that will never rust, and finished with a glaze that repels stains, scratches and dings.





6307 — Shown in White

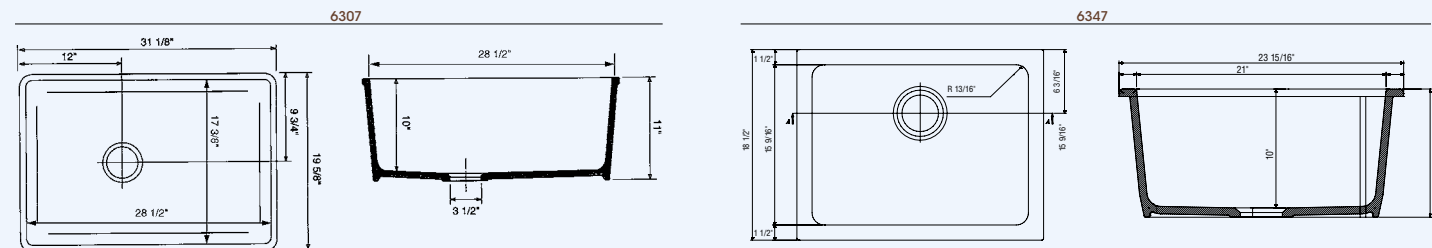
6307 — Shown in Matte Black

6347 — Shown in White

Faucet Pictured: A3608WS with A1435 Filter Faucet, AS425 Air Switch Disposal Button and LS650C Soap Dispenser

**Single Bowl Undermount Sinks**

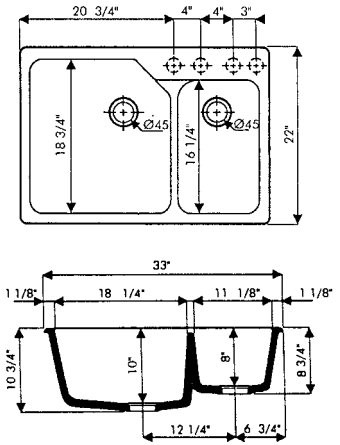
- Acid and alkali resistant glazed surfaces
- Large, deep bowl
- Available finishes: Biscuit, Pergame and Matte Black
- Standard 3 1/2" drain
- Stain and scratch resistant



6327 — Four Hole Shown in White  
6317 — Same sink above available with single hole (Not shown)

**One-and-a-Half-Bowl Sink**

- Extra deep bowls
- Standard 3 1/2" drains
- Rear drain placement
- Model 6317 - (Not shown) one pre-drilled hole, three additional knockouts
- Stain and scratch resistant



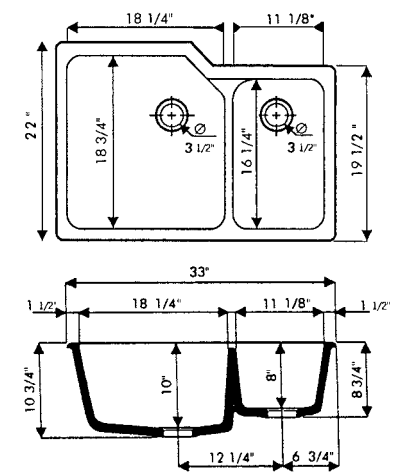
Also available in: Biscuit/Pergame and Matte Black



6337 — Shown in White  
6339 — Same sink above available as reversed layout

**One-and-a-Half-Bowl Undermount Sink**

- Extra deep bowls
- True undermount sink
- Rear drain placement
- Standard 3 1/2" drains
- Stain and scratch resistant



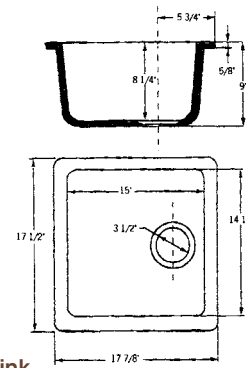
Also available in: Biscuit/Pergame and Matte Black



5927 — Shown in White

**Bar Sink**

- Standard 3 1/2" drain
- Acid and alkali resistant glazed surfaces
- Stain and scratch resistant



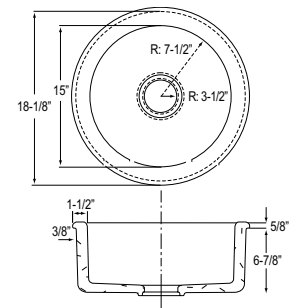
Also available in: Biscuit/Pergame and Matte Black



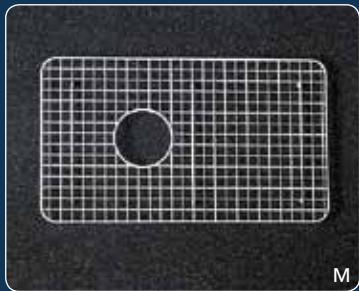
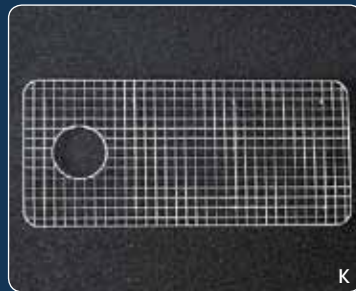
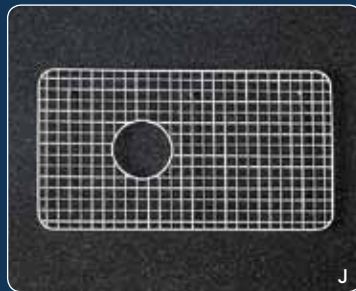
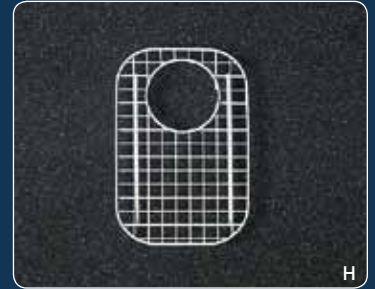
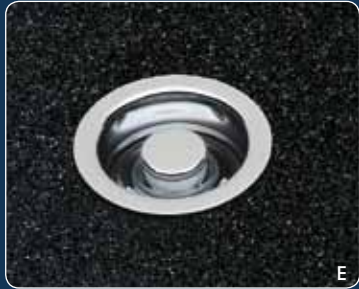
6737 — Shown in White

**Round Prep Sink**

- Standard 3 1/2" drain
- Acid and alkali resistant glazed surfaces
- Stain and scratch resistant



Also available in: Biscuit/Pergame and Matte Black



- A Soap and Lotion Dispenser - LS450L
- B Luxury Air Gap - AG700
- C Air Switch with Control Box for Waste Disposal - AS550
- D Extended Flange - ISE10082
- E Disposal Escutcheon/Disposal Stopper - 743/744
- F Strainer Basket - 735, 733 in Chrome only
- G Strainer Basket with Remote Pop-Up  
737 Chrome basket only  
739 White basket only  
Knob available in various finishes
- H Wire Sink Grid - WSG6327SM, For use in RC6317/6327 and 6337/6339 small bowl sinks
- I Wire Sink Grid - WSG2418, For use in RC2418
- J Wire Sink Grid - WSG3018, For use in RC3018
- K Wire Sink Grid - WSG3618, For use in RC3618
- L Wire Sink Grid - WSG6327LG, For use in RC6317/6327 and 6337/6339 large bowl sinks

- M Wire Sink Grid - WSG6307, For use in RC6307
- N Rinsing Basket - RB6327, For use in 6317, 6327, 6337 and 6339
- O Plate/Bowl Rack - PR6327, For use in 6317, 6327, 6337 and 6339
- P Cutting Board - CB6327, For use in 6317, 6327

**Also Available (Not Shown)**

- Wire Sink Grid - WSG4019SM, For use in RC4019 Shaws small bowl sinks
- Wire Sink Grid - WSG4019LG, For use in RC4019 large bowl sinks
- Wire Sink Grid - WSG6347, For use in 6347 Allia sink
- Wire Sink Grid - WSG5927, For use in 5927 Bar sink
- Wire Sink Grid - WSG6737, For use in 6737 Prep sink
- Wire Sink Grid - WSG1515, For use in RC1515 Prep sink
- Wire Sink Grid - WSG3719, For use in RC3719 Kitchen sink
- Wire Sink Grid - WSG3017, For use in RC3017 Kitchen sink
- Wire Sink Grid - WSGMS3018, For use in MS3018 Kitchen sink

Wire Sink Grids H-M and Q-W are available in White, Biscuit and Stainless Steel.