



Paddian Pressure Balance Trim Without Diverter

ROHL Transitional Paddian

A1900LM

FEATURES

- Paddian metal lever
- Single lever control
- Coverplate, dome, and handle made from solid brass
- Trim for concealed pressure balance shower or bath valve
- **To complete package order #RMV-1 rough valve**

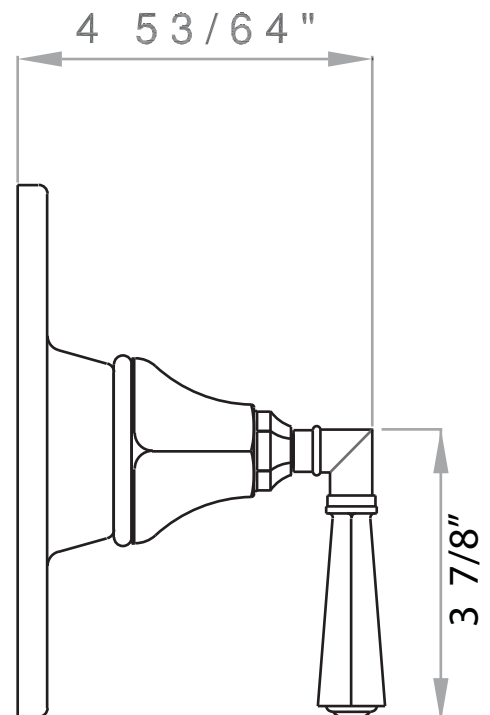
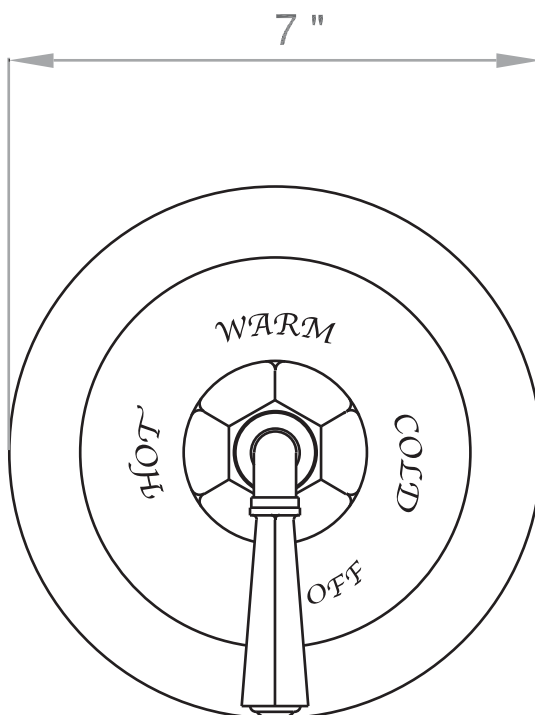
COLORS/FINISHES

- Polished Chrome
- Polished Nickel
- Satin Nickel
- Tuscan Brass
- Inca Brass

WARRANTY

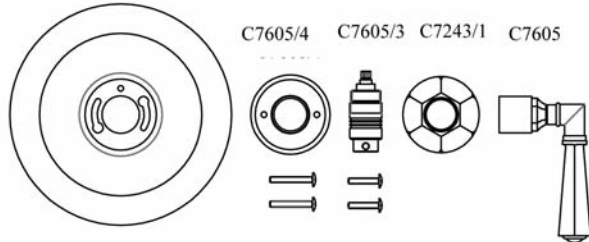
- Limited Lifetime*

* No Warranty on Tuscan Brass Finish

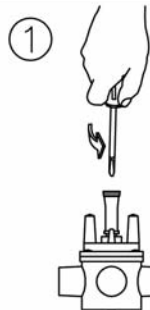


A1900 Spare Parts and Installation Instructions

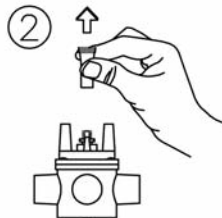
IMPORTANT:
ROUGH AND TRIM MUST BE PURCHASED SEPARATELY. PLEASE NOTE THE HANDLE PIECES ARE ASSEMBLED IN THE BOX. YOU MUST DISASSEMBLE FOR INSTALLATION (SEE DRAWING).



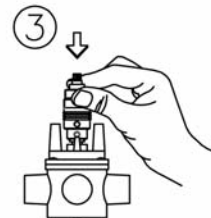
ASSEMBLING INSTRUCTIONS



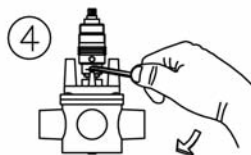
UNSCREW THE ADAPTER'S SCREW



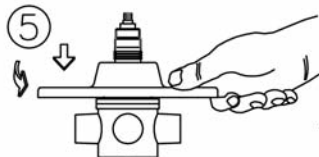
REMOVE THE ADAPTER, BUT LEAVE THE CAM STOP 1403-0896 IN PLACE (NOT PICTURED)



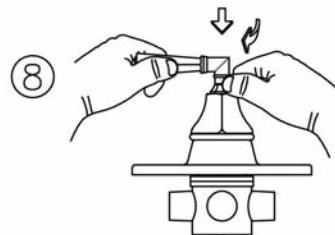
INSERT THE NEW ADAPTER FOR A7605 (PLEASE SEE UNDER THE "WALL LIMITS NOTE")



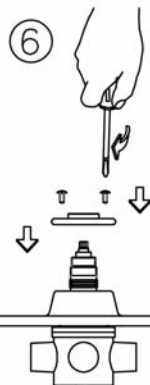
SCREW THE ADAPTER'S DOWEL TIGHTEN THE ADAPTER ONTO THE SPINDLE WITH A 3 mm. ALLEN KEY (NOT INCLUDED)



PLACE THE EXTERNAL PLATE PLEASE NOTE, THE ADAPTER HAS A VARIABLE LENGTH TO ADJUST FOR THE VALVE DEPTH. FIT THE PLATE, AND SCREW THE ADAPTER OUT TO EXPOSE THE 3 O-RINGS. ADJUST THE DEPTH AS NEEDED; THEN TIGHTEN WITH 3mm. ALLEN KEY



INSERT THE HANDLE AND FIX IT SCREWING THE HEXAGONAL COVER VALVE ATTENTION: BE SURE THAT THE HANDLE HAS NO PLAY UNSCREW THE CAP JUST TO GET IN TOUCH WITH THE COVER VALVE



PLACE THE ADAPTER'S RING AND FIX IT WITH THE SCREWS



SCREW THE HEXAGONAL CAP HAVING CARE TO UNSCREW 1/4 TURN TO THE END

WALL LIMITS NOTE

FINISHED WALL LIMITS (TEMPRESS TEMPLATE INDICATION)

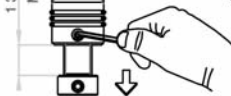
MINIMUM

MAXIMUM



ADJUSTING THE ADAPTER LENGTH

UNSCREW THE DOWEL EXTRACT THE LOWER PART SCREW THE DOWEL



ATTENTION : ENSURE ALL PARTS ARE FIRMLY TIGHTENED